



PLX

**FUNCTIONALITY
HAS A NEW
DESIGN**

CAME 

[CAME.COM](https://www.came.com)



PLX SERIES

PLX is the brand new range of hands-free audio or audio/video entry receivers with a hi-performance speaker that provides loud ringtone as well as crisp audio.

Where video is an option for the system, a 5" colour display creates crystal clear images from the entry panel feed. It has a resolution of 480 x 272 pixel and it's equipped with OSD technology for brightness, contrast and colour adjustment.



MINIMAL AND THIN

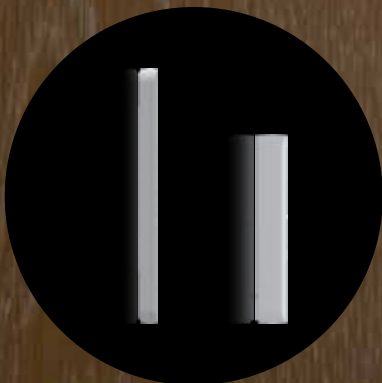
An elegant receiver which combines minimalism and functionality. Matt white finish, a sleek streamlined shape, and only 25 mm thickness for the video version, 21 mm for the audio version.

HANDS FREE

The advanced solution and innovative design of the hidden speaker and microphone, allow crystal clear audio as well as loud ringtone.

VOLUME ADJUSTMENT

Ringtone management (volume adjustment/mute mode) can be easily controlled by the display buttons, whilst an LED indicator provides a visual indicator.



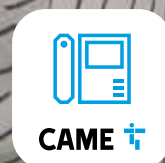
THE ANSWER TO YOUR DESIRE FOR FREEDOM

THE WI-FI CONNECTED VERSION

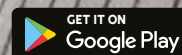
PLX WIFI allows you pick up the video entry call directly from your smartphone.

You can talk to the person who is ringing and you can open the gate or the entrance door even if you are not home. Thanks to a standard Wi-Fi Internet connection, it is possible to pick up the call from every room in the house, from the garden or while you are far away, in the office or stuck in the traffic.

PLX WIFI is equipped with an integrated Wi-Fi module that connects to any domestic router for accessing the Internet. Simply installing the CAME VIDEOENTRY APP on one or more devices, it is possible to get free access to this function.



CAME VIDEOENTRY APP
available on:



ADVANCED FEATURES

CAME.COM



REAL SCALE 5"

OSD function for brightness, contrast and colour adjustment.

AUXILIARY OUTPUT

The auxiliary commands can be configured according to specific needs thanks to the dip-switch selection. PLX is equipped with AUX2, allowing a porter or reception call. At the same time, up to 5 AUX or 6 intercom calls can be arranged.

LATCH FUNCTION

The on board latch function, allows users to know if the gate or door is open even when it is not immediately visible, by using a LED icon.

This enables the user to latch open the gate or door for a period of time for a specific purpose, before switching it off and resuming normal access control once complete.

AUTOMATIC DOOR OPENING

In scenarios where you have high volume of entry/exit, for example offices or public places, PLX allows you to engage the automatic door function with no need for additional access control.

Using the existing buttons on the device, this function can easily be switched on/off.



SOFT TOUCH BUTTONS

Size and shape are perfectly balanced, colour and finish are stylish and elegant. A lot of care has been put on the buttons technology, developing a refined soft touch solution. A white LED visual indicator sits beneath the surface, making the buttons easy to locate in low light settings.



FUNCTIONS FOR SIGHT AND HEARING IMPAIRED

As part of the wider set of features, PLX receivers have built in functionality that enables the use of system by those suffering from audio and visual impairment.

Audio Induction Loop technology is embedded in PLX V BF model, to assist the usage of the videoentry device via hearing aids.

Moreover, the concave design of the soft touch controls allows the visually impaired to effortlessly interact with the receiver.





Models for:
X1 AND XIP SYSTEMS

PLX V

- 5" display
- OSD for image adjustment
- Soft-touch buttons
- Ringtone adjustment
- Latch function
- 5 AUX
- 6 intercom
- Automatic door opener

PLX V BF

- 5" display
- OSD for image adjustment
- Soft-touch buttons
- Ringtone adjustment
- Latch function
- 5 AUX
- 6 intercom
- Automatic door opener
- Function for hearing impaired



PLX V WIFI

- Integrated Wi-Fi module
- 5" display
- OSD for image adjustment
- Soft-touch buttons
- Ringtone adjustment
- Latch function
- 5 AUX
- 6 intercom
- Automatic door opener

PLX V WIFI BF

- Integrated Wi-Fi module
- 5" display
- OSD for image adjustment
- Soft-touch buttons
- Ringtone adjustment
- Latch function
- 5 AUX
- 6 intercom
- Automatic door opener
- Function for hearing impaired



AGT KT V TABLE MOUNTING

PLX can be supplied with an additional table mounting.



Display 5"
480 x 272 pixel

Menu navigation keys
Intercom / AUX

Menu



Pick up / Hang up

Ringtone
adjustment / mute
mode

Door release

Camera monitoring

Aux 2 / Porter call



Models for:
X1 AND XIP SYSTEMS

PLX A

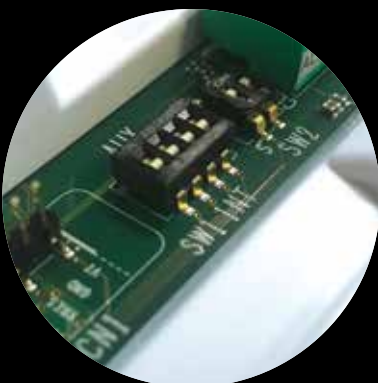
- Door opener
- Soft-touch buttons
- Ringtone adjustment
- Automatic door opener
- Larch function
- 5 AUX
- 6 intercom

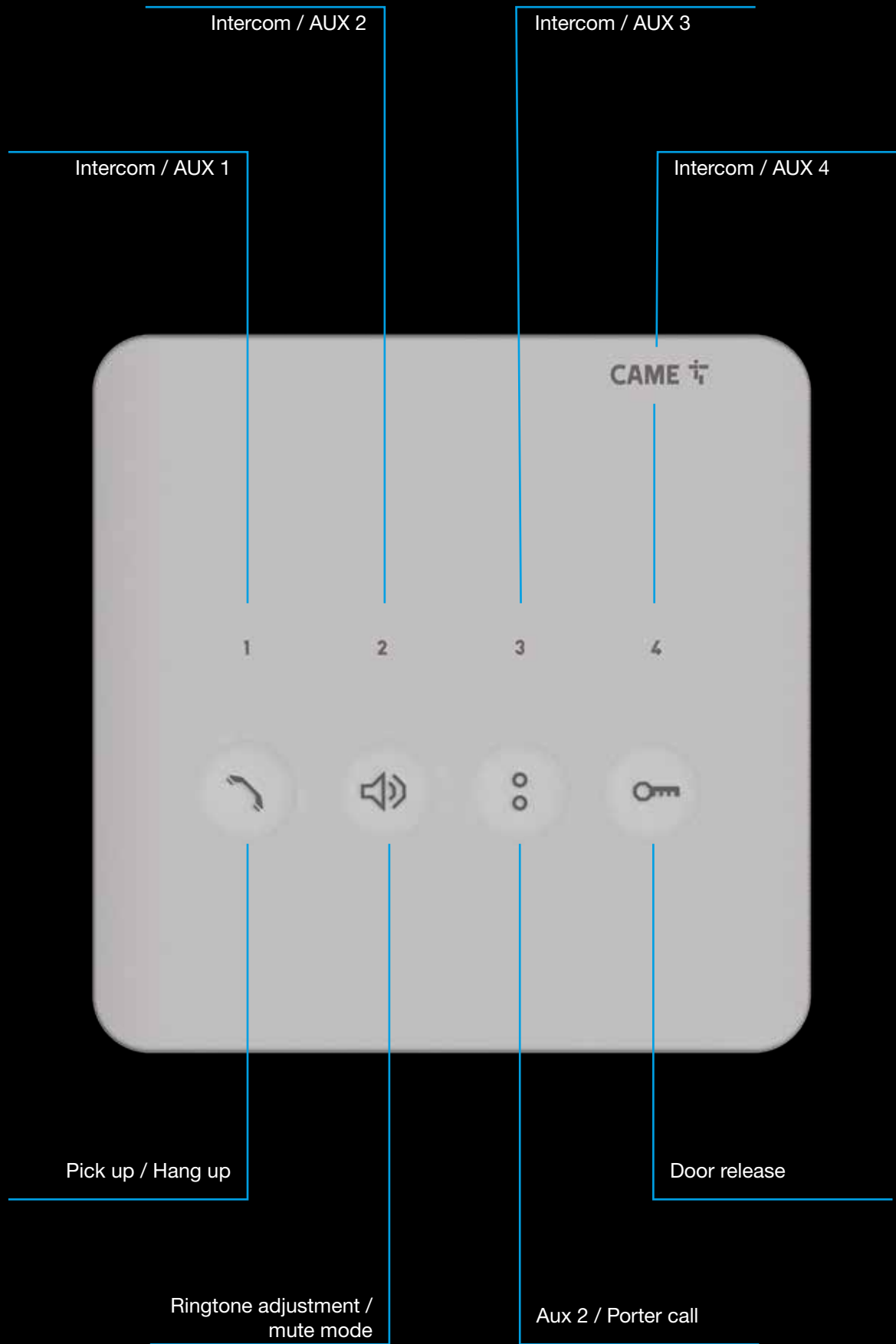


DIP-SWITCH CONFIGURATION

The dip-switch on the rear of the device, allows different configurations of the buttons of PLX.

The buttons with the numbers 1 - 2 - 3 - 4, can be set as intercom calls, or as AUX for additional controls.





EASY INSTALLATION

Supplied surface mounted, installation of PLX couldn't be easier, with no tracing work required prior to installation.

It's also compatible with both 503 and 60 mm horizontal and vertical back boxes.



WALL MOUNTING FRAME

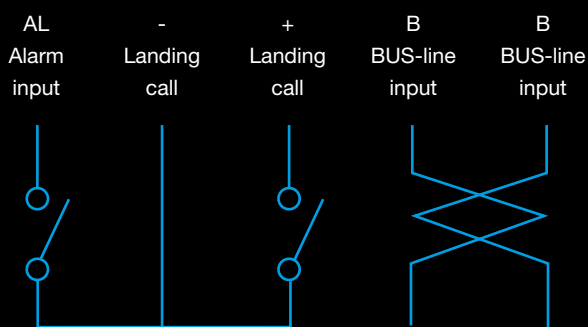
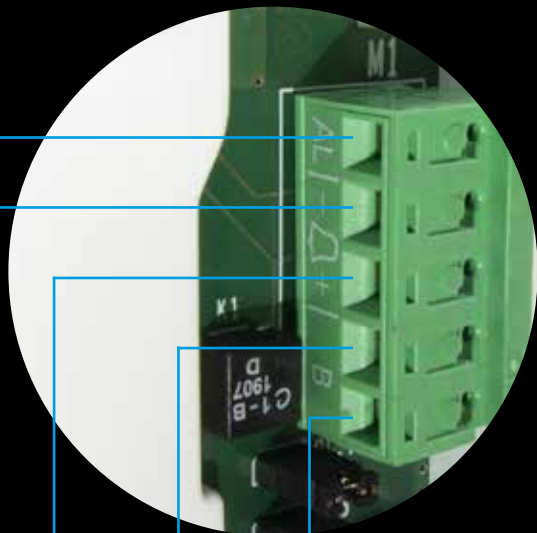
The wall mounting frame is the perfect solution also to replace old models.

Once the wall bracket has been fixed, the receiver is quickly settled thanks to the easy plug-in system.

PERLA MODELS COMPATIBILITY

PLX has been designed for ease of retrofit, so system upgrades can be carried out easily, with easily accessible wiring on the back of the receiver. The footprint of the PLX is marginally larger than its predecessor, PERLA, so any surface blemishes will be covered during the retrofit installation.



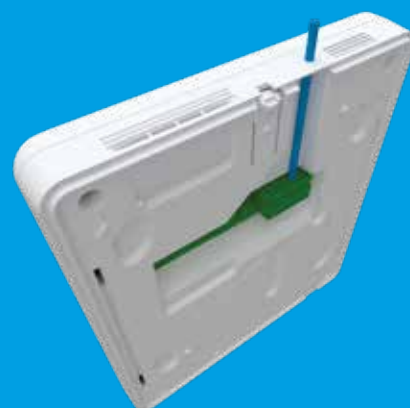


TECHNICAL FEATURES

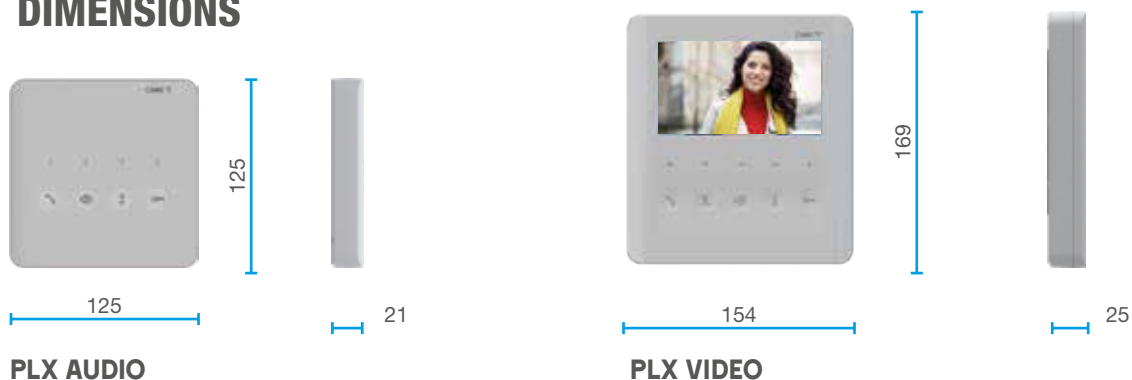
MODELS	840CC-0030	840CH-0110	840CH-0120	840CH-0130	840CH-0140
Alimentation (VDC)	15 ÷ 20	15 ÷ 20	15 ÷ 20	15 ÷ 20	15 ÷ 20
Consumption (mA)	30	200	200	200	200
Consumption in stand-by mode(mA)	< 1	< 1	< 1	< 1	< 1
Consumption LED simple (mA)	1	1	1	1	1
Storage temperature (°C)	de -25 ÷ +70	de -25 ÷ +70	de -25 ÷ +70	de -25 ÷ +70	de -25 ÷ +70
Operating temperature (°C)	de +5 ÷ +40	de +5 ÷ +40	de +5 ÷ +40	de +5 ÷ +40	de +5 ÷ +40
IP Rating	IP 30	IP 30	IP 30	IP 30	IP 30
Standard video	-	PAL/NTSC	PAL/NTSC	PAL/NTSC	PAL/NTSC
Display LCD TFT (inches)	-	5	5	5	5

SIMPLE CONNECTIONS

PLX is equipped with a removable terminal block to facilitate wiring. Simply remove the terminal block from the receiver body, make the connections and reinsert the terminal block on the receiver. PLX has also a dedicated groove on the back side for installation with wiring external to the wall. For easy replacement, PLX has been developed with the same terminal block of PERLA and AGATA X1 series.



DIMENSIONS



CODES / ITEMS

CODES	ITEMS	DESCRIPTIONS	SYSTEM COMPATIBILITY
AUDIO ENTRY FOR X1 AND XIP SYSTEM			
840CC-0030	PLX A	PLX A Hands-free video intercom with soft-touch keys for X1 system, 4 keys for intercom calls or AUX commands, key for ringtone adjustment and exclusion, white colour.	X1 XIP
VIDEO ENTRY FOR X1 AND XIP SYSTEM			
840CH-0110	PLX V	PLX V Hands-free video intercom with soft-touch keys for X1 system, 5" LCD display, 4 keys for intercom calls or AUX commands, key for ringtone adjustment and exclusion, white colour.	X1 XIP
840CH-0120	PLX V BF	PLX V BF Hands-free video intercom with soft-touch keys for X1 system, 5" LCD display, 4 keys for intercom calls or AUX commands, key for ringtone adjustment and exclusion, white colour. Hearing aid function for hearing impaired users.	X1 XIP
VIDEO ENTRY FOR X1 AND XIP SYSTEM			
840CH-0130	PLX V WIFI	PLX V Hands-free wi-fi video intercom with soft-touch keys for X1 system, 5" LCD display, 4 keys for intercom calls or AUX commands, key for ringtone adjustment and exclusion, white colour.	X1 XIP
840CH-0140	PLX V WIFI BF	PLX V BF Hands-free wi-fi video intercom with soft-touch keys for X1 system, 5" LCD display, 4 keys for intercom calls or AUX commands, key for ringtone adjustment and exclusion, white colour. Hearing aid function for hearing impaired users.	X1 XIP
ACCESSORIES FOR VIDEO ENTRY			
840XC-0150	AGT KT V	Plexiglass 10 mm-thick stand, supplied with white RJ45 cable and terminal board cover with PMMA laminate - metallic gray.	X1

© CAME SPA -KADENTUE21- 2021 - EN
CAME reserves the right to make any changes to this document, at any time. Even partial reproduction is prohibited.

CAME

CAME S.P.A.
Via Martiri della Libertà, 15
31030 Dosson di Casier
Treviso - ITALY

CAME.COM

We are a leading multinational supplier of integrated high-tech solutions for automating residential, public and urban settings, which generate intelligent spaces for the wellbeing of people.

- GATES AUTOMATION
- VIDEO ENTRY SYSTEMS
- GARAGE AND INDUSTRIAL DOOR AUTOMATION
- AUTOMATIC BARRIERS
- PARKING SYSTEMS
- TURNSTYLES AND SPEED GATES
- BOLLARDS AND ROAD BLOCKERS
- HEATING CONTROL
- AUTOMATIC DOORS
- SHUTTER AND BLIND SOLUTIONS
- BURGLAR ALARM SYSTEMS
- HOME AUTOMATION

CE

